

HIGHLIGHTS OF PRESCRIBING INFORMATION

These highlights do not include all the information needed to use REZDIFFRA safely and effectively. See full prescribing information for REZDIFFRA.

REZDIFFRA (resmetirom) tablets, for oral use
Initial U.S. Approval: 2024

INDICATIONS AND USAGE

REZDIFFRA is a thyroid hormone receptor-beta (THR-beta) agonist indicated in conjunction with diet and exercise for the treatment of adults with noncirrhotic nonalcoholic steatohepatitis (NASH) with moderate to advanced liver fibrosis (consistent with stages F2 to F3 fibrosis).

This indication is approved under accelerated approval based on improvement of NASH and fibrosis. Continued approval for this indication may be contingent upon verification and description of clinical benefit in confirmatory trials. (1)

Limitations of Use

Avoid use of REZDIFFRA in patients with decompensated cirrhosis. (1)

DOSAGE AND ADMINISTRATION

- The recommended dosage of REZDIFFRA is based on actual body weight. For patients weighing:
 - <100 kg, the recommended dosage is 80 mg orally once daily.
 - ≥100 kg, the recommended dosage is 100 mg orally once daily.Administer REZDIFFRA with or without food. (2.1)
- See full prescribing information for REZDIFFRA dosage modifications with concomitant use of moderate CYP2C8 inhibitors. (2.2)

DOSAGE FORMS AND STRENGTHS

Tablets: 60 mg, 80 mg, and 100 mg (3)

CONTRAINDICATIONS

None.

WARNINGS AND PRECAUTIONS

- Hepatotoxicity:** Monitor patients during treatment with REZDIFFRA for elevations in liver tests and for the development of liver-related

adverse reactions. Discontinue REZDIFFRA and continue to monitor the patient if hepatotoxicity is suspected. (5.1)

- Gallbladder-Related Adverse Reactions:** Cholelithiasis and cholecystitis were observed more often in REZDIFFRA-treated patients. If cholelithiasis is suspected, gallbladder diagnostic studies and appropriate clinical follow-up are indicated. If an acute gallbladder event such as acute cholecystitis is suspected, interrupt REZDIFFRA treatment until the event is resolved. (5.2)

ADVERSE REACTIONS

The most common adverse reactions with REZDIFFRA (reported in at least 5% of patients and higher compared to placebo) are: diarrhea, nausea, pruritus, vomiting, constipation, abdominal pain, and dizziness. (6.1)

To report SUSPECTED ADVERSE REACTIONS, contact Madrigal Pharmaceuticals, at 1-800-905-0324 or FDA at 1-800-FDA-1088 or www.fda.gov/medwatch.

DRUG INTERACTIONS

- Strong or Moderate CYP2C8 Inhibitors:** Concomitant use not recommended (strong inhibitor [e.g., gemfibrozil]); or reduce REZDIFFRA dosage (moderate inhibitor [e.g., clopidogrel]). (2.2, 7.1)
- OATP1B1 and OATP1B3 Inhibitors:** Concomitant use with OATP inhibitors (e.g., cyclosporine) is not recommended. (7.1)
- Atorvastatin, Pravastatin, Rosuvastatin and Simvastatin:** Limit the daily dosage of the statin as recommended. (5.3, 7.2)
- CYP2C8 Substrates:** Monitor patients more frequently for substrate-related adverse reactions. (7.2)

USE IN SPECIFIC POPULATIONS

Hepatic Impairment: Avoid use of REZDIFFRA in patients with moderate to severe hepatic impairment (Child-Pugh Class B or C). (8.7)

See 17 for PATIENT COUNSELING INFORMATION and FDA-approved patient labeling.

Revised: 03/2024

FULL PRESCRIBING INFORMATION: CONTENTS*

1 INDICATIONS AND USAGE

2 DOSAGE AND ADMINISTRATION

- 2.1 Recommended Dosage and Administration
- 2.2 Dosage Modifications for CYP2C8 Inhibitors

3 DOSAGE FORMS AND STRENGTHS

4 CONTRAINDICATIONS

5 WARNINGS AND PRECAUTIONS

- 5.1 Hepatotoxicity
- 5.2 Gallbladder-Related Adverse Reactions
- 5.3 Drug Interaction with Certain Statins

6 ADVERSE REACTIONS

- 6.1 Clinical Trials Experience

7 DRUG INTERACTIONS

- 7.1 Effects of Other Drugs on REZDIFFRA
- 7.2 Effects of REZDIFFRA on Other Drugs

8 USE IN SPECIFIC POPULATIONS

- 8.1 Pregnancy

8.2 Lactation

8.4 Pediatric Use

8.5 Geriatric Use

8.6 Renal Impairment

8.7 Hepatic Impairment

11 DESCRIPTION

12 CLINICAL PHARMACOLOGY

12.1 Mechanism of Action

12.2 Pharmacodynamics

12.3 Pharmacokinetics

13 NONCLINICAL TOXICOLOGY

13.1 Carcinogenesis, Mutagenesis, Impairment of Fertility

14 CLINICAL STUDIES

16 HOW SUPPLIED/STORAGE AND HANDLING

17 PATIENT COUNSELING INFORMATION

* Sections or subsections omitted from the full prescribing information are not listed.

FULL PRESCRIBING INFORMATION

1 INDICATIONS AND USAGE

REZDIFFRA is indicated in conjunction with diet and exercise for the treatment of adults with noncirrhotic nonalcoholic steatohepatitis (NASH) with moderate to advanced liver fibrosis (consistent with stages F2 to F3 fibrosis).

This indication is approved under accelerated approval based on improvement of NASH and fibrosis [see *Clinical Studies (14)*]. Continued approval for this indication may be contingent upon verification and description of clinical benefit in confirmatory trials.

Limitations of Use

Avoid use of REZDIFFRA in patients with decompensated cirrhosis [see *Use in Specific Populations (8.7)*, *Clinical Pharmacology (12.3)*].

2 DOSAGE AND ADMINISTRATION

2.1 Recommended Dosage and Administration

The recommended dosage of REZDIFFRA is based on actual body weight. For patients weighing:

- <100 kg, the recommended dosage is 80 mg orally once daily.
- ≥100 kg, the recommended dosage is 100 mg orally once daily.

Administer REZDIFFRA with or without food [see *Clinical Pharmacology (12.3)*].

2.2 Dosage Modifications for CYP2C8 Inhibitors

Concomitant use of REZDIFFRA with strong CYP2C8 inhibitors (e.g., gemfibrozil) is not recommended [see *Drug Interactions (7.1)*].

If REZDIFFRA is used concomitantly with a moderate CYP2C8 inhibitor (e.g., clopidogrel) [see *Drug Interactions (7.1)*], reduce the dosage of REZDIFFRA:

- <100 kg, reduce the dosage of REZDIFFRA to 60 mg once daily.
- ≥100 kg, reduce the dosage of REZDIFFRA to 80 mg once daily.

3 DOSAGE FORMS AND STRENGTHS

REZDIFFRA Tablets:

- 60 mg: white oval-shaped film-coated tablets debossed with “P60” on one side and plain on the other side.
- 80 mg: yellow, oval-shaped, film-coated tablets debossed with “P80” on one side and plain on the other side.
- 100 mg: beige to pink, oval-shaped, film-coated tablets debossed with “P100” on one side and plain on the other side.

4 CONTRAINDICATIONS

None.

5 WARNINGS AND PRECAUTIONS

5.1 Hepatotoxicity

Hepatotoxicity has been observed with use of REZDIFFRA. One patient had normal alanine aminotransferase (ALT), aspartate aminotransferase (AST), and total bilirubin (TB) levels at baseline, who received REZDIFFRA 80 mg daily, developed substantial elevations of liver biochemistries that resolved when treatment was interrupted. After reinitiating REZDIFFRA, the patient had elevations of ALT, AST, and TB. Peak values observed were 58 x upper limit of normal (ULN) for ALT, 66 x ULN for AST, 15 x ULN for TB, with no elevation of alkaline phosphatase (ALP). Elevations in liver enzymes were accompanied by elevations in immunoglobulin G levels, suggesting drug-induced autoimmune-like hepatitis (DI-ALH). The liver tests returned to baseline following hospitalization and discontinuation of REZDIFFRA without any therapeutic intervention.

Monitor patients during treatment with REZDIFFRA for elevations in liver tests and for the development of liver-related adverse reactions. Monitor for symptoms and signs of hepatotoxicity (e.g., fatigue, nausea, vomiting, right upper quadrant pain or tenderness, jaundice, fever, rash, and/or eosinophilia [$>5\%$]). If hepatotoxicity is suspected, discontinue REZDIFFRA and continue to monitor the patient. If laboratory values return to baseline, weigh the potential risks against the benefits of restarting REZDIFFRA. If laboratory values do not return to baseline, consider DI-ALH or autoimmune liver disease in the evaluation of elevations in liver tests.

5.2 Gallbladder-Related Adverse Reactions

In clinical trials, cholelithiasis, acute cholecystitis, and obstructive pancreatitis (gallstone) were observed more often in REZDIFFRA-treated patients than in placebo-treated patients. If cholelithiasis is suspected, gallbladder diagnostic studies and appropriate clinical follow-up are indicated. If an acute gallbladder event is suspected, interrupt REZDIFFRA treatment until the event is resolved [see *Adverse Reactions (6.1)*].

5.3 Drug Interaction with Certain Statins

An increase in exposure of atorvastatin, pravastatin, rosuvastatin and simvastatin was observed when concomitantly administered with REZDIFFRA [see *Clinical Pharmacology (12.3)*], which may increase the risk of adverse reactions related to these drugs. Dosage adjustment for certain statins is recommended [see *Drug Interactions (7.2)*]. Monitor for statin-related adverse reactions including but not limited to elevation of liver tests, myopathy, and rhabdomyolysis.

6 ADVERSE REACTIONS

The following clinically significant adverse reactions are described elsewhere in labeling:

- Hepatotoxicity [see *Warnings and Precautions (5.1)*]
- Gallbladder-Related Adverse Reactions [see *Warnings and Precautions (5.2)*]

6.1 Clinical Trials Experience

Because clinical trials are conducted under widely varying conditions, adverse reaction rates observed in the clinical trials of a drug cannot be directly compared with rates in clinical trials of another drug and may not reflect the rates observed in clinical practice.

The safety of REZDIFFRA was evaluated in two randomized, double-blind, placebo-controlled trials that enrolled a total of 2019 patients.

Trial 1

Trial 1 included patients who had noncirrhotic NASH with stages F2 and F3 fibrosis at eligibility (n=888) [see *Clinical Studies (14)*].

Adverse Reactions Leading to Discontinuations

The exposure-adjusted incidence rates (EAIRs) per 100 person-years (PY) for treatment discontinuation due to any adverse reaction were higher in the REZDIFFRA dosage arms: 4 per 100 PY, 5 per 100 PY, and 8 per 100 PY in placebo, REZDIFFRA 80 mg once daily, and REZDIFFRA 100 mg once daily arms, respectively. Diarrhea and nausea were the most common causes of treatment discontinuation.

Common Adverse Reactions

Table 1 displays EAIRs per 100 PY for the common adverse reactions that occurred in at least 5% of patients with F2 or F3 fibrosis treated in either drug arm with REZDIFFRA and were greater than that reported for placebo.

Table 1: Exposure-Adjusted Incidence Rates (EAIR) of Common Adverse Reactions Reported with REZDIFFRA in Adult Patients with Noncirrhotic NASH (Trial 1)^{a, b, c}

Adverse Reaction	Placebo N=294 n (EAIR ^d)	REZDIFFRA 80 mg Once Daily N=298 n (EAIR ^d)	REZDIFFRA 100 mg Once Daily N=296 n (EAIR ^d)
Diarrhea	52 (14)	78 (23)	98 (33)
Nausea	36 (9)	65 (18)	51 (15)
Pruritus	18 (4)	24 (6)	36 (10)
Vomiting	15 (4)	27 (7)	30 (8)
Constipation	18 (4)	20 (5)	28 (8)
Abdominal pain	18 (4)	22 (5)	27 (7)
Dizziness	6 (1)	17 (4)	17 (4)

^a Population includes adult patients with noncirrhotic NASH with liver fibrosis (stages F2 and F3 at eligibility).

^b Median exposure duration was 68 weeks for placebo, 74 weeks for REZDIFFRA 80 mg once daily, and 66 weeks for REZDIFFRA 100 mg once daily.

^c EAIRs are per 100 person-years (PY) where total PYs were 435, 435, and 407 for placebo, 80 mg once daily, and 100 mg once daily arms, respectively.

^d The EAIR per 100 PY can be interpreted as an estimated number of first occurrences of the adverse reaction of interest if 100 patients are treated for one year.

Abbreviations: EAIR, exposure-adjusted incidence rate; PY, person-years; NASH, nonalcoholic steatohepatitis

Gastrointestinal Adverse Reactions

The incidence of gastrointestinal adverse reactions was higher for the REZDIFFRA drug arms compared to placebo. The EAIRs for gastrointestinal adverse reactions were 57 per 100 PY, 73 per 100 PY, and 89 per 100 PY in the placebo, REZDIFFRA 80 mg once daily, REZDIFFRA 100 mg once daily arms, respectively.

Diarrhea typically began early in treatment initiation and was mild to moderate in severity. The median time (Q1 to Q3) to a diarrheal event was 39 (2 to 195) days, 17 (3 to 70) days, and 6 (2 to 54) days in the placebo, REZDIFFRA 80 mg once daily, and REZDIFFRA 100 mg once daily arms, respectively.

Median duration of diarrhea was 9 days for placebo compared to 20 days for both REZDIFFRA 80 mg once daily and REZDIFFRA 100 mg once daily dosage arms.

Nausea also began early in treatment and was mild to moderate in severity. Among patients with nausea, the median time (Q1 to Q3) to a nausea event was 85 (24 to 347) days, 28 (2 to 162) days, and 5 (2 to 40) days in the placebo, REZDIFFRA 80 mg once daily, and REZDIFFRA 100 mg once daily arms, respectively. Median duration of nausea was 17 days, 26 days, and 28 days for patients in the placebo, REZDIFFRA 80 mg once daily, and REZDIFFRA 100 mg once daily arms, respectively. Vomiting and abdominal pain adverse reactions were mild to moderate in severity.

Hypersensitivity Reactions

Reactions such as urticaria and rash, which may reflect drug hypersensitivity, were observed in patients receiving REZDIFFRA. The EAIRs for urticaria were 0.2 per 100 PY, 0.7 per 100 PY, and 1.5 per 100 PY in the placebo, REZDIFFRA 80 mg once daily, and REZDIFFRA 100 mg once daily arms, respectively. The EAIRs for rash were 3 per 100 PY in the placebo and REZDIFFRA 80 mg once daily arms compared to 5 per 100 PY in the REZDIFFRA 100 mg once daily arm.

Gallbladder-Related Adverse Reactions

A higher incidence of cholelithiasis, acute cholecystitis, and obstructive pancreatitis (gallstone) was observed in the treatment arms compared to placebo. However, the EAIRs for these events were less than 1 per 100 PY for all treatment arms.

Less Common Adverse Reactions

Additional adverse reactions that occurred more frequently in the REZDIFFRA arms compared to placebo, in less 5% of patients, included decreased appetite, flatulence, abnormal feces, dysgeusia, vertigo, arrhythmia, palpitations, depression, erythema, hypoglycemia, tendinopathy, abnormal uterine bleeding.

Laboratory Abnormalities

Liver Tests

Increases in mean alanine aminotransferase (ALT) and aspartate aminotransferase (AST) levels were observed in the first 4 weeks after initiating treatment with REZDIFFRA. In both REZDIFFRA dosage arms, the mean elevation in ALT and AST values was less than 1.5 times baseline at 4 weeks after treatment initiation. These values returned to baseline around 8 weeks after initiating treatment.

Table 2 presents the frequency of liver test elevations during Trial 1.

Table 2: Frequency of Liver Test Elevations in Trial 1

	Placebo (%)	REZDIFFRA 80 mg Once Daily (%)	REZDIFFRA 100 mg Once Daily (%)
ALT > 3x ULN	10	11	13
ALT > 5x ULN	2	2	2
AST > 3x ULN	10	9	12
AST > 5x ULN	2	1	4
TB^a > 2x ULN	2	1	3

^a TB elevations include patients with Gilbert syndrome.

Thyroid Function Tests

A decrease in levels of prohormone free T4 (FT4) of mean 2%, 13%, and 17% was seen at 12 months in patients treated with placebo, REZDIFFRA 80 mg once daily, and REZDIFFRA 100 mg once daily, respectively, with minimal changes in active hormone T3 or in TSH. There were no clinical findings associated with FT4 decreases.

Additional Safety Data

The safety evaluation of REZDIFFRA also included an analysis of an additional randomized placebo-controlled safety trial which included 969 patients from a relevant patient population (placebo [n=318], REZDIFFRA 80 mg once daily [n=327], and REZDIFFRA 100 mg once daily [n=324]).

Data from the safety trial was combined with data from NASH patients with F2 and F3 fibrosis at eligibility (n=888) and data from an additional 162 patients from a relevant patient population enrolled in Trial 1. In the combined safety population (n=2019), the median (Q1 to Q3) age of patients at baseline was 58 (50 to 65) years; 55% were female, 28% were Hispanic, 89% were White, 2% were Asian, and 4% were Black or African American.

The safety profile from this combined analysis was similar to that in Trial 1, other than the one case of hepatotoxicity in the safety trial [see *Warnings and Precautions (5.1)*].

7 DRUG INTERACTIONS

7.1 Effects of Other Drugs on REZDIFFRA

Table 3 includes clinically significant drug interactions affecting REZDIFFRA.

Table 3: Clinically Significant Interactions Affecting REZDIFFRA

Strong or Moderate CYP2C8 Inhibitors	
Clinical Impact	Resmetirom is a CYP2C8 substrate. Concomitant use with a strong or moderate CYP2C8 inhibitor can increase resmetirom C _{max} and AUC [see <i>Clinical Pharmacology (12.3)</i>], which may increase the risk of REZDIFFRA adverse reactions.
Intervention	Concomitant use of REZDIFFRA with strong CYP2C8 inhibitors (e.g., gemfibrozil) is not recommended. Reduce REZDIFFRA dosage if used concomitantly with a moderate CYP2C8 inhibitor (e.g., clopidogrel) [see <i>Dosage and Administration (2.2)</i>].
Organic Anion-Transporting Polypeptides (OATP) 1B1 and OATP1B3 Inhibitors	
Clinical Impact	Resmetirom is an OATP1B1 and OATP1B3 substrate. Concomitant use with OATP1B1 and OATP1B3 inhibitors may increase resmetirom C _{max} and AUC [see <i>Clinical Pharmacology (12.3)</i>], which may increase the risk of REZDIFFRA adverse reactions.
Intervention	Concomitant use of REZDIFFRA with OATP1B1 or OATP1B3 inhibitors (e.g., cyclosporine) is not recommended.

7.2 Effects of REZDIFFRA on Other Drugs

Table 4 includes clinically significant drug interactions affecting other drugs.

Table 4: Clinically Significant Interactions Affecting Other Drugs

Statins (Atorvastatin, Pravastatin, Rosuvastatin, or Simvastatin)	
Clinical Impact	REZDIFFRA increased plasma concentrations of some statins (atorvastatin, pravastatin, rosuvastatin and simvastatin) [see <i>Clinical Pharmacology (12.3)</i>], which may increase the risk of adverse reactions related to these drugs.

Intervention	Rosuvastatin and simvastatin: Limit daily statin dosage to 20 mg. Pravastatin and atorvastatin: Limit daily statin dosage to 40 mg.
CYP2C8 Substrates	
Clinical Impact	Resmetirom is a weak CYP2C8 inhibitor. Resmetirom increases exposure of CYP2C8 substrates [see <i>Clinical Pharmacology (12.3)</i>], which may increase the risk of adverse reactions related to these substrates.
Intervention	Monitor patients more frequently for substrate-related adverse reactions if REZDIFFRA is co-administered with CYP2C8 substrates where minimal concentration changes may lead to serious adverse reactions.

8 USE IN SPECIFIC POPULATIONS

8.1 Pregnancy

Risk Summary

There are no available data on REZDIFFRA use in pregnant women to evaluate for a drug-associated risk of major birth defects, miscarriage, or other adverse maternal or fetal outcomes. There are risks to the mother and fetus related to underlying NASH with liver fibrosis (see *Clinical Considerations*). In animal reproduction studies, adverse effects on embryo-fetal development occurred in pregnant rabbits treated with resmetirom at 3.5 times the maximum recommended dose during organogenesis. These effects were associated with maternal toxicity, whereas no embryo-fetal effects were observed at lower dose levels with better tolerance in pregnant rabbits. No embryo-fetal developmental effects occurred in pregnant rats treated with resmetirom or the metabolite MGL-3623. A pre- and postnatal development study in rats with maternal dosing of resmetirom during organogenesis through lactation showed a decrease in birthweight and increased incidence of stillbirths and mortality (postnatal days 1-4) at 37 times the maximum recommended dose (see *Data*). These effects were associated with marked suppression of maternal T4, T3, and TSH levels.

The background risk of major birth defects and miscarriage for the indicated population is unknown. All pregnancies have a background risk of birth defect, loss, and other adverse outcomes. In the U.S. general population, the estimated background risk of major birth defects and miscarriage in clinically recognized pregnancies is 2 to 4% and 15 to 20%, respectively.

Report pregnancies to Madrigal Pharmaceuticals, Adverse Event reporting line at 1-800-905-0324 and <https://www.madrigalpharma.com/contact/>.

Clinical Considerations

Disease-Associated Maternal and/or Embryo/Fetal Risk

There are risks to the mother and fetus related to underlying maternal NASH with liver fibrosis, such as increased risks of gestational diabetes, hypertensive complications, preterm birth, and postpartum hemorrhage.

Data

Animal Data

No effects on embryo-fetal development were observed in pregnant rats treated orally with up to 100 mg/kg/day (21 times the maximum recommended dose based on AUC [area under the plasma concentration-time curve]) or in pregnant rabbits treated orally with up to 30 mg/kg/day (2.8 times the maximum recommended dose based on AUC) during the period of organogenesis. Oral administration of 75 mg/kg/day in pregnant rabbits (3.5 times the maximum recommended dose based on AUC) produced an increase in post-implantation loss and decreases in viable fetuses and

fetal weight. These effects were likely due to maternal toxicity (i.e., marked reductions in weight gain and food consumption).

A pre- and postnatal development study was performed using oral administration of 3, 30, or 100 mg/kg/day in female rats during organogenesis through lactation. Treatment with 100 mg/kg/day (37 times the maximum recommended dose based on AUC) produced increases in number of stillborn, pup deaths during postnatal days 1-4, and pups with absence of milk in stomach. Birthweight was decreased by 10% in this dose group, with recovery to normal body weight thereafter. The effects in offspring were associated with marked reductions in maternal plasma levels of T4 (88% decrease), T3 (79% decrease), and TSH (44% decrease). No effects on postnatal development were observed at doses up to 30 mg/kg/day (7.2 times the maximum recommended dose based on AUC). This study lacked a complete evaluation of physical and neurobehavioral development in offspring; however, no effects of resmetirom were noted in tests of learning and memory.

The metabolite MGL-3623 was tested for its effects on embryo-fetal development. No effects were observed in pregnant rats treated orally with up to 100 mg/kg/day MGL-3623 (4.7 times the maximum recommended dose based on AUC for MGL-3623) during the period of organogenesis.

8.2 Lactation

Risk Summary

There is no information regarding the presence of REZDIFFRA in human or animal milk, the effects on the breast-fed infant, or the effects on milk production. The developmental and health benefits of breastfeeding should be considered along with the mother's clinical need for REZDIFFRA and any potential adverse effects on the breastfed infant from REZDIFFRA or from the underlying maternal condition.

8.4 Pediatric Use

The safety and effectiveness of REZDIFFRA have not been established in pediatric patients.

8.5 Geriatric Use

In Trial 1, of the 594 patients with NASH who received at least one dose of REZDIFFRA, 149 (25%) were 65 years of age and older and 13 (2%) were 75 years of age and older [see *Clinical Studies (14)*]. No overall differences in effectiveness but numerically higher incidence of adverse reactions have been observed in patients 65 years of age and older compared to younger adult patients.

8.6 Renal Impairment

The recommended dosage in patients with mild or moderate renal impairment is the same as in patients with normal kidney function. REZDIFFRA has not been studied in patients with severe renal impairment [see *Clinical Pharmacology (12.3)*].

8.7 Hepatic Impairment

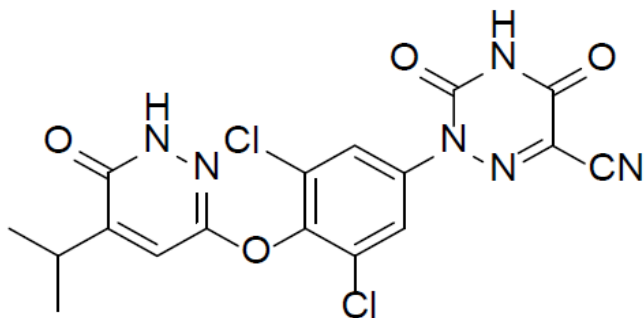
Avoid use of REZDIFFRA in patients with decompensated cirrhosis (consistent with moderate to severe hepatic impairment). Moderate or severe hepatic impairment (Child-Pugh Class B or C) increases resmetirom C_{max} and AUC [see *Clinical Pharmacology (12.3)*], which may increase the risk of adverse reactions.

No dosage adjustment is recommended for patients with mild hepatic impairment (Child-Pugh Class A) [see *Clinical Pharmacology (12.3)*].

The safety and effectiveness of REZDIFFRA have not been established in patients with NASH cirrhosis.

11 DESCRIPTION

REZDIFFRA (resmetirom) tablets contain resmetirom, a thyroid hormone receptor-beta agonist. The chemical name for REZDIFFRA is 2-[3,5-Dichloro-4-((6-oxo-5-(propan-2-yl)-1,6-dihydropyridazin-3-yl)oxy)phenyl]-3,5-dioxo-2,3,4,5-tetrahydro-1,2,4-triazine-6-carbonitrile. The molecular formula is $C_{17}H_{12}Cl_2N_6O_4$ and the molecular weight is 435.22. The chemical structure is:



Resmetirom has low aqueous solubility below pH 6 and higher solubility above pH 7 (0.44 mg/mL at pH 7.04).

REZDIFFRA tablets are supplied in 60 mg, 80 mg, and 100 mg strengths for oral administration. Each tablet contains the active ingredient, resmetirom, and the following USP/NF excipients: colloidal silicon dioxide, croscarmellose sodium, magnesium stearate, mannitol, and microcrystalline cellulose. REZDIFFRA tablets are film-coated with an Opadry coating comprised of polyethylene glycol, polyvinyl alcohol, talc, titanium dioxide, red iron oxide (100 mg tablets), yellow iron oxide (80 mg and 100 mg tablets).

12 CLINICAL PHARMACOLOGY

12.1 Mechanism of Action

Resmetirom is a partial agonist of the thyroid hormone receptor-beta (THR- β). Resmetirom produced 83.8% of the maximum response compared to triiodothyronine (T3), with an EC_{50} of 0.21 μ M in an in vitro functional assay for THR- β activation. The same functional assay for thyroid hormone receptor-alpha (THR- α) agonism showed 48.6% efficacy for resmetirom relative to T3, with an EC_{50} of 3.74 μ M. THR- β is the major form of THR in the liver, and stimulation of THR- β in the liver reduces intrahepatic triglycerides, whereas actions of thyroid hormone outside the liver, including in heart and bone, are largely mediated through THR- α .

12.2 Pharmacodynamics

Liver Fat Content

Resmetirom decreases liver fat content as measured by magnetic resonance imaging-protein density fat fraction (MRI-PDFF) or FibroScan controlled attenuation parameter (CAP).

Reductions in liver fat content by MRI-PDFF were observed at 16 (the first assessment) and 52 weeks of treatment. Reductions in liver fat content by CAP were observed at 52 weeks of treatment.

Prohormone FT4

Resmetirom decreased concentrations of prohormone FT4 were observed at the first assessment at 4 weeks of treatment. Similar decreases in FT4 were observed during the treatment [see *Adverse Reactions* (6.1)].

Sex Hormone Binding Globulin (SHBG)

Resmetirom increased concentrations of sex hormone binding globulin (SHBG) were observed at the first assessment at 4 weeks of treatment, and at longer durations of treatment. The clinical significance of this change is unknown.

Cardiac Electrophysiology

At a dose two times the maximum recommended dose, REZDIFFRA does not prolong the QT interval to any clinically relevant extent.

12.3 Pharmacokinetics

Following once daily doses, steady state is typically reached within 3 to 6 days of dosing. Resmetirom steady state exposure increases in a dose proportional manner between doses of 40 mg (0.5 times the lowest approved recommended dose) and 100 mg. Resmetirom exposure increases in a greater than dose proportional manner between doses of 100 mg and 200 mg (2 times the highest approved recommended dose) by about 5.6-fold. Resmetirom exposure increased 1.5- to 3-fold following once daily dosing; however, the MGL-3623 metabolite does not accumulate. The estimated resmetirom systemic exposure at steady state in NASH patients is summarized in Table 5. Resmetirom exposure is similar between NASH patients with F2 stage fibrosis and F3 stage fibrosis.

Table 5: Resmetirom Estimated Systemic Exposure at Steady State in Patients with NASH with Fibrosis (F2 and F3)

Parameter	Resmetirom 80 mg Once Daily Mean (CV%)	Resmetirom 100 mg Once Daily Mean (CV%)
$C_{max,ss}$ (ng/mL) ^a	778 (41.5)	971 (40.9)
$AUC_{\tau,ss}$ (ng*h/mL) ^a	5850 (60.5)	7780 (65.5)

Abbreviations: $AUC_{\tau,ss}$ = area under the concentration-versus-time curve over one dosing interval at steady state; $C_{max,ss}$ = maximum concentration at steady state; CV = arithmetic coefficient of variation

Absorption

The resmetirom median time to maximum plasma concentration (T_{max}) is approximately 4 hours following multiple daily doses of resmetirom 80 mg or 100 mg.

Effect of Food

No clinically significant differences in resmetirom pharmacokinetics were observed following administration with a high-fat meal (approximately 150, 250, and 500-600 calories from protein, carbohydrate, and fat, respectively). Concomitant food administration resulted in a 33% decrease in C_{max} , an 11% decrease in AUC, and a delay in median T_{max} by about 2 hours compared to under fasted condition.

Distribution

Resmetirom apparent volume of distribution (V_d/F) at steady-state is 68 (227%) L. Resmetirom is greater than 99% protein-bound.

Elimination

Resmetirom median terminal plasma half-life ($t_{1/2}$) is 4.5 hours and the steady state apparent clearance (CL/F) is 17.5 (56.3%) L/h.

Metabolism

Resmetirom is metabolized by CYP2C8 and is not metabolized by other CYP enzymes in vitro.

MGL-3623 is a major metabolite with a 28-times lower potency for THR- β than resmetirom.

MGL-3623 represents 33% to 51% of resmetirom AUC at steady state following administration of 100 mg once daily.

Excretion

Following oral administration of a 100 mg radio-labeled dose of resmetirom, approximately 67% of the total radioactive dose was recovered in the feces, mostly as metabolites and 24% of the total radioactive dose was recovered in the urine. Unchanged labeled resmetirom was not detected in feces and accounted for 1% of the dose recovered in urine. A metabolite MGL-3623 accounted for 3.3% and 16% of the dose recovered in feces and urine, respectively. Oxalic acid metabolite was observed in plasma but not in urine.

Specific Populations

No clinically significant differences in the pharmacokinetics of resmetirom were observed based on age (18 to 83 years), sex, race (White, Black, or Asian), or ABCG2 genotype (BCRP p.Gln141Lys, p.Val12Met).

Population PK analyses indicated no clinically significant difference in the pharmacokinetics of resmetirom by mild to moderate renal impairment (eGFR 30 to 89 mL/min/1.73 m², Modification of Diet in Renal Disease (MDRD)). The effect of severe renal impairment (eGFR < 30 mL/min/1.73 m², MDRD) on resmetirom pharmacokinetics is unknown.

Body Weight

A clinically significant difference in resmetirom exposure was not observed with the recommended weight-based dosage. However, resmetirom CL/F and Vd/F increase with increasing body weight, resulting in lower resmetirom exposure in patients with higher body weight receiving the same dosage as lower weight patients [see *Dosage and Administration* (2.1)].

Patients with Hepatic Impairment

Patients with Hepatic Impairment: Following repeated 80 mg once daily dosing of REZDIFFRA for 6 days, resmetirom AUC was 1.3-fold, 2.7-fold and 19-fold higher in patients with mild, moderate and severe hepatic impairment (Child-Pugh A, B and C), respectively compared to subjects with normal hepatic function. Resmetirom C_{max} was 1.2-fold, 1.7-fold and 8.1-fold higher in patients with mild, moderate and severe hepatic impairment, respectively, compared to subjects with normal hepatic function (Table 6).

In the same study, MGL-3623 AUC_{tau} was 1.3-fold, 2-fold and 5.8-fold higher in patients with mild, moderate and severe hepatic impairment, respectively, compared to subjects with normal hepatic function [see *Use in Specific Populations* (8.7)].

Table 6: Mean (CV%) Resmetirom Systemic Exposure in Subjects with Normal Hepatic Function and Non-NASH Patients with Hepatic Impairment Following REZDIFFRA 80 mg Once Daily for 6 Days and Exposure Change Relative to Normal Hepatic Function

Parameter	Normal Hepatic Function (N = 7)	Child-Pugh Class		
		A Mild (N = 10)	B Moderate (N = 9)	C Severe (N = 3)
Resmetirom				

C_{max,ss} (ng/mL)^a	1070 (51.0)	1390 (67.8)	1830 (47.5)	7730 (17.4)
AUC_{tau,ss} (ng*h/mL)^a	5100 (51.5)	5570 (66.4)	15100 (65.8) ^b	97600 (39.0)

^a Exposure parameters presented as Mean (CV%)

^b N = 8

Abbreviations: AUC_{tau,ss} = area under the concentration-versus-time curve over one dosing interval at steady state; C_{max,ss} = maximum concentration at steady state; CV = arithmetic coefficient of variation

NASH Patients with Mild Hepatic Impairment (Child-Pugh A): Geometric mean AUC and C_{max} in NASH cirrhosis patients with mild hepatic impairment (Child-Pugh Class A; n = 20) were 6% higher and 10% lower, respectively, compared to non-cirrhotic NASH patients following repeated 100 mg once daily dosing of REZDIFFRA for 6 days. The safety and effectiveness of REZDIFFRA have not been established in patients with NASH cirrhosis.

Drug Interaction Studies

Clinical Studies

Moderate CYP2C8 Inhibitors: Resmetirom C_{max} increased 1.3-fold and AUC 1.7-fold following concomitant use of multiple doses of REZDIFFRA 100 mg/day with clopidogrel (a moderate CYP2C8 inhibitor) at steady-state in healthy subjects [see *Drug Interactions (7.1)*].

CYP2C8 Substrates: Pioglitazone (a CYP2C8 substrate) C_{max} was unchanged and AUC increased 1.5-fold following concomitant use of a single oral dose of pioglitazone (15 mg) with resmetirom at steady state (100 mg/day) in healthy subjects [see *Drug Interactions (7.1)*].

Simvastatin: Simvastatin (OATP1B1 and OATP1B3 substrate) C_{max} increased 1.4-fold and AUC 1.7-fold following concomitant use of a single oral dose of simvastatin (20 mg) with resmetirom at steady state (100 mg/day) in healthy subjects [see *Drug Interactions (7.2)*].

Rosuvastatin: Rosuvastatin (BCRP, OATP1B1, and OATP1B3 substrate) C_{max} increased 2.9-fold and AUC 1.8-fold following concomitant use of a single oral dose of rosuvastatin (10 mg) with resmetirom at steady state (at two times the highest recommended dosage) in healthy subjects [see *Drug Interactions (7.2)*].

Pravastatin: Pravastatin (OATP1B1 and OATP1B3 substrate) C_{max} increased 1.3-fold and AUC 1.4-fold following concomitant use of a single oral dose of pravastatin (40 mg) with resmetirom at steady state (100 mg/day) in healthy subjects [see *Drug Interactions (7.2)*].

Atorvastatin: Atorvastatin (BCRP, OATP1B1, and OATP1B3 substrate) C_{max} was unchanged and AUC increased 1.4-fold following concomitant use of a single oral dose of atorvastatin (20 mg) with resmetirom at steady state (100 mg/day) in healthy subjects. Atorvastatin lactone C_{max} increased 2.0-fold and AUC increased 1.8-fold [see *Drug Interactions (7.2)*].

Other Drugs: No clinically significant differences in the pharmacokinetics of R-warfarin or S-warfarin were observed when used concomitantly with resmetirom.

In Vitro Studies

CYP450 Enzymes: Resmetirom is an inhibitor of CYP2C8.

Glucuronidation Enzymes: Resmetirom is an inhibitor of UDP-glucuronosyltransferases (UGTs) 1A4 and 1A9. The clinical relevance of UGT1A4 and UGT1A9 inhibition is unknown.

Transporters: Resmetirom is a substrate for organic anion-transporting polypeptides (OATP) 1B1 and 1B3 and breast cancer resistance protein (BCRP). Resmetirom inhibits OATP1B1, OATP1B3, BCRP,

OAT3, and bile salt export pump (BSEP). The clinical significance of OAT3 and BSEP inhibition is unknown.

13 NONCLINICAL TOXICOLOGY

13.1 Carcinogenesis, Mutagenesis, Impairment of Fertility

Carcinogenesis

In a 2-year study in CD-1 mice, resmetirom produced leiomyoma or leiomyosarcoma in the uterus at a dose of 100 mg/kg/day (51 times the maximum recommended dose based on AUC). No tumorigenic effects were observed in female mice at doses of up to 30 mg/kg/day (14 times the maximum recommended dose based on AUC) or in male mice at doses of up to 100 mg/kg/day (35 times the maximum recommended dose based on AUC).

In a 2-year study in Sprague-Dawley rats, resmetirom produced benign fibroadenoma in the mammary gland of males at a dose of 30 mg/kg/day (6.5 times the maximum recommended dose based on AUC). No tumorigenic effects were observed in male rats at doses of up to 6 mg/kg/day (3.7 times the maximum recommended dose based on AUC) or in female rats at doses of up to 30 mg/kg/day (3.4 times the maximum recommended dose based on AUC).

In a 26-week study in transgenic [CByB6F1-Tg(HRAS)2Jic] mice, the major metabolite of resmetirom, MGL-3623, was not tumorigenic at doses of up to 1500 mg/kg/day.

Mutagenesis

Resmetirom was negative in the in vitro bacterial reverse mutation (Ames) assay, the in vitro chromosomal aberration assay in human peripheral blood lymphocytes, the in vitro micronucleus assay in L5178Y tk⁺ mouse lymphoma cells, and the in vivo rat micronucleus assay.

The metabolite MGL-3623 was negative in the in vitro bacterial reverse mutation (Ames) assay and the in vivo rat micronucleus assay. MGL-3623 tested positive in the presence of metabolic activation in the in vitro micronucleus assay with TK6 human lymphoblast cells, with the increase in micronuclei limited to a single concentration that produced 59% growth inhibition.

Impairment of Fertility

Resmetirom had no effects on fertility or reproductive function in male and female rats at oral doses of up to 30 mg/kg/day (6.9 times and 2.6 times the maximum recommended dose in male and female rats, respectively, based on AUC).

14 CLINICAL STUDIES

The efficacy of REZDIFFRA was evaluated based on an efficacy analysis at Month 12 in Trial 1 (NCT03900429), a 54-month, randomized, double-blind, placebo-controlled trial. Enrolled patients had metabolic risk factors and a baseline or recent liver biopsy showing NASH with fibrosis stage 2 or 3 and a NAFLD Activity Score (NAS) of at least 4. Efficacy determination was based on the effect of REZDIFFRA on resolution of steatohepatitis without worsening of fibrosis and one stage improvement in fibrosis without worsening of steatohepatitis, on post-baseline liver biopsies collected at 12 months.

The month 12 analysis included 888 F2 and F3 (at eligibility) patients randomized 1:1:1 to receive placebo (n = 294), REZDIFFRA 80 mg once daily (n = 298), or REZDIFFRA 100 mg once daily (n = 296), in addition to lifestyle counseling on nutrition and exercise. Patients were on stable doses of medications for diabetes, dyslipidemia, and hypertension.

Demographic and baseline characteristics were balanced between treatment and placebo groups. Overall, the median (Q1 to Q3) age of patients at baseline was 58 (51 to 65) years, 56% were female, 21% were Hispanic, 89% were White, 3% were Asian, and 2% were Black or African American. Median (Q1 to Q3) body mass index (BMI) was 35 (31 to 40) kg/m² and median (Q1 to Q3) body weight was 99 (85 to 114) kg. Baseline characteristics are presented in Table 7.

Table 7: Baseline Characteristics in Adults Patients with Noncirrhotic NASH with Stage 2 to Stage 3 Fibrosis in Trial 1

Characteristic	Overall N=888
Fibrosis stage, n (%)	
F2	328 (37)
F3	560 (63)
Type 2 Diabetes, n (%)	608 (68)
Hypertension, n (%)	700 (79)
Dyslipidemia, n (%)	633 (71)
Statin use, n (%)	434 (49)
Thyroxine use, n (%)	124 (14)
Vibration-controlled Transient Elastography (VCTE) (kPa), Median (Q1, Q3) ^{a, b}	12 (10, 15)
Controlled attenuation parameter (CAP) (Db/M), Median (Q1, Q3) ^a	349 (320, 378)
Fibrosis Index Based on 4 Factors (FIB-4), Median (Q1, Q3) ^a	1.3 (1, 1.8)
Enhanced Liver Fibrosis (ELF), Median (Q1, Q3) ^a	9.7 (9.2, 10.4)

^a Less than 5% missingness in these variables is omitted.

^b kPa = kilopascal; Db/M = decibels per meter

Table 8 presents the Month 12 histopathology results comparing REZDIFFRA with placebo on 1) the percentage of patients with resolution of steatohepatitis and no worsening of liver fibrosis and 2) the percentage of patients with at least one stage improvement in liver fibrosis and no worsening of steatohepatitis. Two pathologists, Pathologist A and Pathologist B, independently read the liver biopsies for each patient. Both the 80 mg once daily and the 100 mg once daily dosages of REZDIFFRA demonstrated improvement on these histopathology endpoints at Month 12 compared to placebo. In a statistical analysis incorporating both pathologists' independent readings, REZDIFFRA achieved statistical significance on both histopathology endpoints for both doses.

Examination of age, gender, diabetes status (Yes or No), and fibrosis stage (F2 or F3) subgroups did not identify differences in response to REZDIFFRA among these subgroups. The majority of patients in the trial were white (89%); there were too few patients of other races to adequately assess differences in response by race.

Table 8: Efficacy Results at Month 12 in Adult Patients with Noncirrhotic NASH with Stage 2 or Stage 3 Fibrosis in Trial 1

	Placebo N=294	REZDIFFRA 80 mg Once Daily N=298	REZDIFFRA 100 mg Once Daily N=296
Resolution of steatohepatitis and no worsening of liver fibrosis			
Response rate, Pathologist A (%)	13	27	36
Difference in response rate vs. placebo (95% CI)		14 (8, 20)	23 (16, 30)
Response rate, Pathologist B (%)	9	26	24
Difference in response rate vs. placebo (95% CI)		17 (11, 23)	15 (9, 21)
Improvement in liver fibrosis and no worsening of steatohepatitis			
Response rate, Pathologist A (%)	15	23	28
Difference in response rate vs. placebo (95% CI)		8 (2, 14)	13 (7, 20)
Response rate, Pathologist B (%)	13	23	24
Difference in response rate vs. placebo (95% CI)		11 (5, 17)	11 (5, 17)

Liver fibrosis was evaluated on the NASH Clinical Research Network (CRN) fibrosis score as 0 to 4. Resolution of steatohepatitis was defined as a score of 0–1 for inflammation, 0 for ballooning, and any value for steatosis. No worsening of steatohepatitis was defined as no increase in score for ballooning, inflammation, or steatosis. Estimated using the Mantel-Haenszel method stratified by baseline type 2 diabetes status (presence or absence) and fibrosis stage (F2 or F3). 95% stratified Newcombe confidence intervals (CIs) are provided. Patients with missing liver biopsy at Month 12 are considered a non-responder.

Starting at Month 3 and through Month 12, there was a trend of greater reductions from baseline in average ALT and AST in the REZDIFFRA groups as compared to the placebo group.

16 HOW SUPPLIED/STORAGE AND HANDLING

How Supplied

REZDIFFRA (resmetirom) tablets are packaged in white high-density polyethylene bottles closed with a child-resistant closure containing an induction seal.

60 mg Tablets: white oval-shaped film-coated tablets, debossed “P60” on one side and plain on the other side.

- NDC 82576-060-30 60 mg tablets (30 count)

80 mg Tablets: yellow, oval-shaped, film-coated tablets, debossed with “P80” on one side and plain on the other side.

- Bottle of 30 count (NDC 82576-080-30)
- Bottle of 90 count (NDC 82576-080-90)

100 mg Tablets: beige to pink, oval-shaped, film-coated tablets, debossed with “P100” on one side and plain on the other side.

- Bottle of 30 count (NDC 82576-100-30)

- Bottle of 90 count (NDC 82576-100-90)

Storage and Handling

Store at 20 °C to 25°C (68 °F to 77°F); excursions permitted to 15 °C to 30°C (59° F to 86°F) [see *USP Controlled Room Temperature*].

17 PATIENT COUNSELING INFORMATION

Advise the patient to read the FDA-approved patient labeling (Patient Information).

Hepatotoxicity

Inform patients of the risk of hepatotoxicity. Instruct patients to immediately report any signs or symptoms of severe liver injury (e.g., fatigue, nausea, vomiting, right upper quadrant pain or tenderness, jaundice, fever, rash) to their healthcare provider [see *Warnings and Precautions (5.1)*].

Gallbladder-Related Adverse Reactions

Inform patients of the potential risk for cholelithiasis, cholecystitis, and obstructive pancreatitis (gallstones) during treatment with REZDIFFRA. Instruct patients to contact their healthcare provider if they develop signs or symptoms of these conditions [see *Warnings and Precautions (5.2)*].

Drug Interaction with Statins

Inform patients that concomitant use of REZDIFFRA with some statins may increase the risk of statin-related adverse reactions (e.g., elevation of liver tests, myopathy, rhabdomyolysis) [see *Warnings and Precautions (5.3)*, *Drug Interactions (7.2)*].

Manufactured by: UPM Pharmaceuticals (Bristol, TN)

Manufactured for: Madrigal Pharmaceuticals, West Conshohocken, PA

REZDIFFRA™ (resmetirom) © 2024 Madrigal Pharmaceuticals, Inc.

Part number/Date

PATIENT INFORMATION

REZDIFFRA (rez di' frah)
(resmetirom)
tablets, for oral use

What is REZDIFFRA?

REZDIFFRA is a prescribed medicine used along with diet and exercise to treat adults with nonalcoholic steatohepatitis (NASH) with moderate to advanced liver scarring (fibrosis), but not with cirrhosis of the liver.

It is not known if REZDIFFRA is safe and effective in children (under 18 years old).

Before you take REZDIFFRA, tell your healthcare provider about all of your medical conditions, including if you:

- have any liver problems other than NASH.
- have gallbladder problems or have been told you have gallbladder problems, including gallstones.
- are pregnant or plan to become pregnant. It is not known if REZDIFFRA will harm your unborn baby.
- are breastfeeding or plan to breastfeed. It is not known if REZDIFFRA passes into your breast milk. Talk to your healthcare provider about the best way to feed your baby if you take REZDIFFRA.

Tell your healthcare provider about all the medicines you take, including prescription and over-the-counter medicines, vitamins, and herbal supplements.

REZDIFFRA and other medicines may affect each other, causing side effects. REZDIFFRA may affect the way other medicines work, and other medicines may affect how REZDIFFRA works.

Especially tell your healthcare provider if you take medicines that contain gemfibrozil to help lower your triglycerides, or cyclosporine to suppress your immune system, because REZDIFFRA is not recommended in patients taking these medicines.

Tell your healthcare provider if you are taking medicines such as clopidogrel to thin your blood or statin medicines to help lower your cholesterol.

Know the medicines you take. Keep a list of them to show your healthcare provider and pharmacist when you get a new medicine.

How should I take REZDIFFRA?

- Take REZDIFFRA exactly as your healthcare provider tells you to take it.
- Your dose of REZDIFFRA is based on your body weight.
- Take REZDIFFRA by mouth, 1 time a day with or without food.

What are the possible side effects of REZDIFFRA?

REZDIFFRA may cause serious side effects, including:

- **liver injury (hepatotoxicity).** Stop taking REZDIFFRA and call your healthcare provider right away if you develop the following signs or symptoms of hepatotoxicity:
 - tiredness
 - nausea
 - vomiting
 - fever
 - rash
 - your skin or the white part of your eyes turns yellow (jaundice)
 - pain or tenderness in the upper middle or upper right area of your stomach (abdomen)
- **gallbladder problems.** Gallbladder problems such as gallstones, or inflammation of the gallbladder, or inflammation of the pancreas from gallstones can occur with NASH and may occur if you take REZDIFFRA. Call your healthcare provider right away if you develop any signs or symptoms of these conditions, including nausea, vomiting, fever, or pain in your stomach area (abdomen) that is severe and will not go away. The pain may be felt going from your abdomen to your back and the pain may happen with or without vomiting.

The most common side effects of REZDIFFRA include:

- diarrhea
- nausea
- itching
- stomach (abdominal) pain
- vomiting
- dizziness
- constipation

These are not all the possible side effects of REZDIFFRA. For more information, ask your healthcare provider or pharmacist.

Call your doctor for medical advice about side effects. You may report side effects to FDA at 1-800-FDA-1088. You may also report side effects to www.fda.gov/medwatch.

How should I store REZDIFFRA?

- Store REZDIFFRA at room temperature between 68°F to 77°F (20°C to 25°C).

Keep REZDIFFRA and all medicines out of the reach of children.

General information about the safe and effective use of REZDIFFRA.

Medicines are sometimes prescribed for purposes other than those listed in a Patient Information leaflet. Do not use REZDIFFRA for a condition for which it was not prescribed. Do not give REZDIFFRA to other people, even if they have the same symptoms that you have. It may harm them.

You can ask your pharmacist or healthcare provider for information about REZDIFFRA that is written for health professionals.

What are the ingredients in REZDIFFRA?

Active ingredient: resmetirom

Inactive ingredients: colloidal silicon dioxide, croscarmellose sodium, magnesium stearate, mannitol, and microcrystalline cellulose. The film coating contains: polyethylene glycol, polyvinyl alcohol, talc, titanium dioxide, red iron oxide (100 mg tablets), and yellow iron oxide (80 mg and 100 mg tablets).

Manufactured for and Distributed by:
Madrigal Pharmaceuticals, Inc.
West Conshohocken, PA

This Patient Information has been approved by the U.S. Food and Drug Administration.

Approved: 3/2024